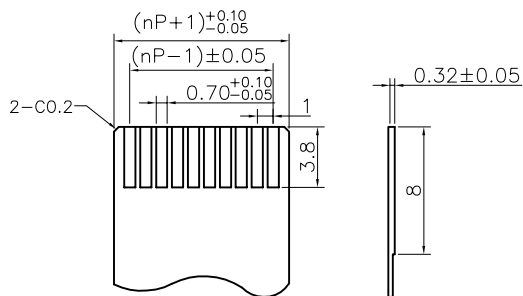
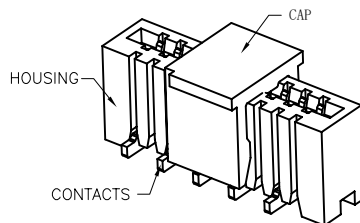
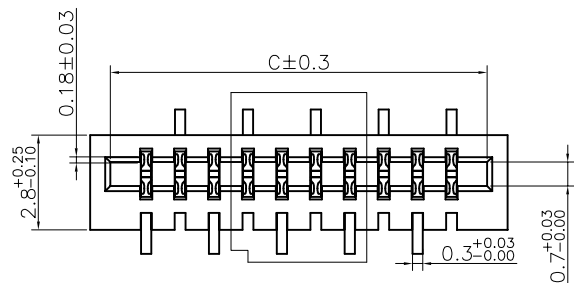
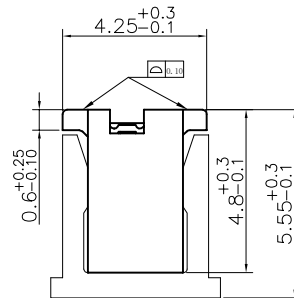
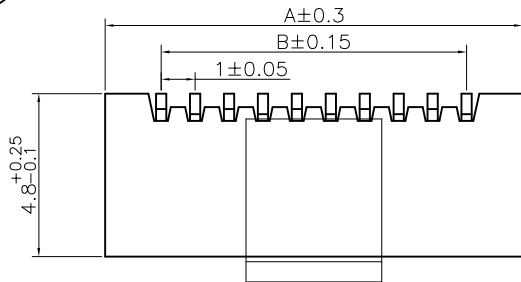
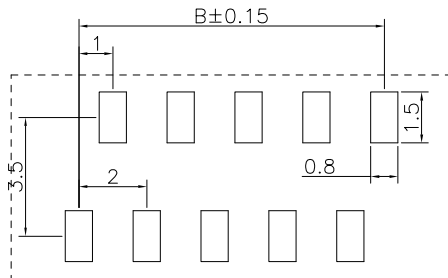


The product using material and processing must conform to the "WI-PZ-001"HSF technical standard control requirements

RoHS



FFC软排线



PCB Layout

NOTE:
 1.MATERIAL SPECIFICATION:
 1-1.HOUSING:PA6T
 1-2.CONTACTS:PHOSPHOR COPPER
 1-3.CAP:LCP
 2.PLATING SPECIFICATION:
 2-1.CONTACTS:
 TIN/AU PLATED OVER ALL.
 4.ELECTRICAL PERFORMANCE:
 4-1. RATED CURRENT : 1A AC,DC
 RATED VOLTAGE : 50V AC/DC
 4-2.INSULATION RESISTANCE: 100MΩ MIN
 CONTACT RESISTANCE : 30mΩ(MAX.)
 4-3.WITHSTANDING VOLTAGE: 500V AC/minute
 5.ENVIRONMENTAL PERFORMANCE:
 OPERATING TEMPERATURE: -25°C~+85°C.
 6.PACKAGE SPEC: REEL
 7P/N: F1005 48 F 0-1 XX 2 X X 01
 SERIES NO: [] COLOR:
 M-BEIGE
 K-WHITE
 S-NATURE
 HEIGHT: []
 48: 4.8mm
 MALE FEMALE:
 F-FEMALE
 PLATING:
 A-ALL AU G/F
 C-BRIGIE TIN
 1-G/F
 TERMPOINT:
 2-SMT
 ROW NO:
 1-SINGLE ROW
 PIN Q'PY:
 04~40

Circuit	Dimensions(mm)			Circuit	Dimensions(mm)		
	A	B	C		A	B	C
04	6.30	3.00	5.10	23	25.30	22.00	24.10
05	7.30	4.00	6.10	24	26.30	23.00	25.10
06	8.30	5.00	7.10	25	27.30	24.00	26.10
07	9.30	6.00	8.10	26	28.30	25.00	27.10
08	10.30	7.00	9.10	27	29.30	26.00	28.10
09	11.30	8.00	10.10	28	30.30	27.00	29.10
10	12.30	9.00	11.10	29	31.30	28.00	30.10
11	13.30	10.00	12.10	30	32.30	29.00	31.10
12	14.30	11.00	13.10	31	33.30	30.00	32.10
13	15.30	12.00	14.10	32	34.30	31.00	33.10
14	16.30	13.00	15.10	33	35.30	32.00	34.10
15	17.30	14.00	16.10	34	36.30	33.00	35.10
16	18.30	15.00	17.10	35	37.30	34.00	36.10
17	19.30	16.00	18.10	36	38.30	35.00	37.10
18	20.30	17.00	19.10	37	39.30	36.00	38.10
19	21.30	18.00	20.10	38	40.30	37.00	39.10
20	22.30	19.00	21.10	39	41.30	38.00	40.10
21	23.30	20.00	22.10	40	42.30	39.00	41.10
22	24.30	21.00	23.10				

REV.	REVISION RECORD	DATE	UNIT:mm	GENERAL TOLERANCES		SCALE:	NAME	DATE	PART.NO:	DWG.NO:	TITLE:	REV: A0	SHEET: 1/1
A0	NEW RELEASE	21.01.13		LINEAR	ANGLES	1:1	Wang_jr	21.01.13					
A1			0.00±0.25	X°REF±6'	APPROVED	Han_Gao	21.01.13						
			0.00±0.25	X°±3'	DESIGNER	Zijun_Huang	21.01.13						
			0.00±0.10	X°X'±2'	DRAWN								



WanLian Teconology Co., Ltd